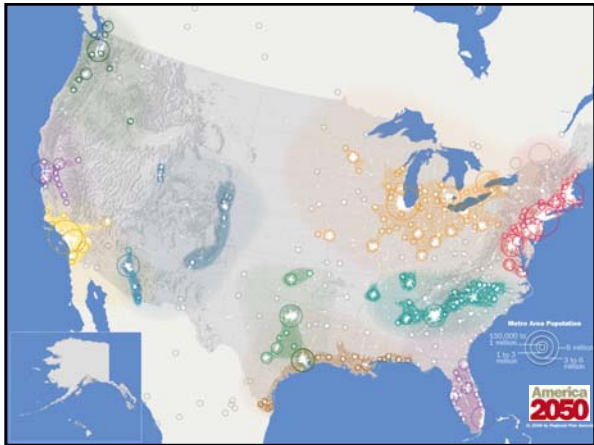


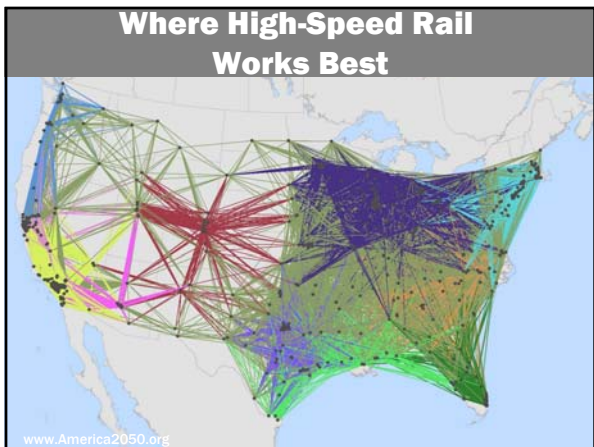


High-Speed Rail: Factors Contributing to Ridership Demand


Petra Todorovich
Director, America 2050
Regional Plan Association

Forging a National Rail Plan for America
May 11, 2010
Union Station



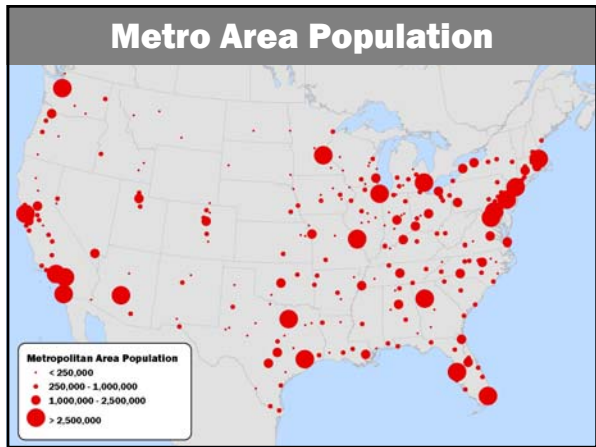


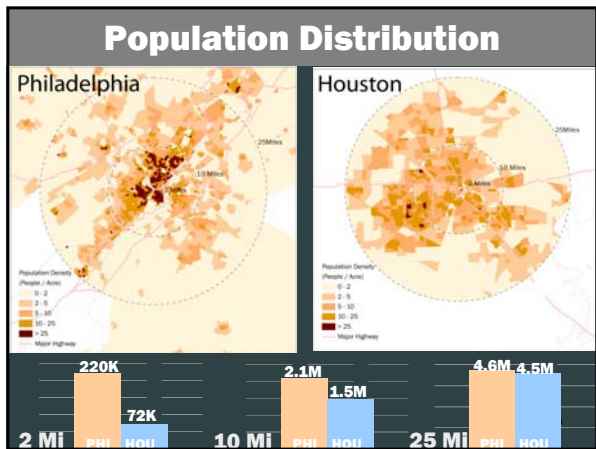
Where High-Speed Rail Works Best



- Population
- Distance
- Transit connections
- Economic productivity
- Congestion
- In a megaregion

www.America2050.org





Special Thanks

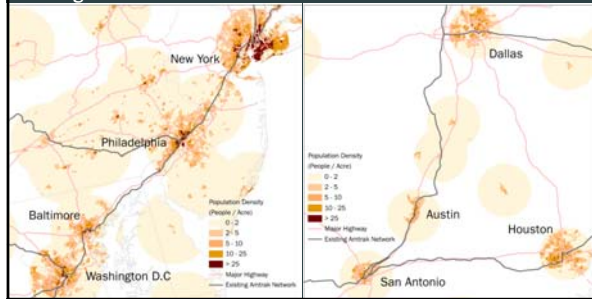
Yoav Hagler, Associate Planner, America 2050
 Frank Hebbert, Associate Planer, GIS
 Lin Zeng, America 2050 Intern

Contact: Petra Todorovich, Petra@rpa.org
 T: 212-253-5795



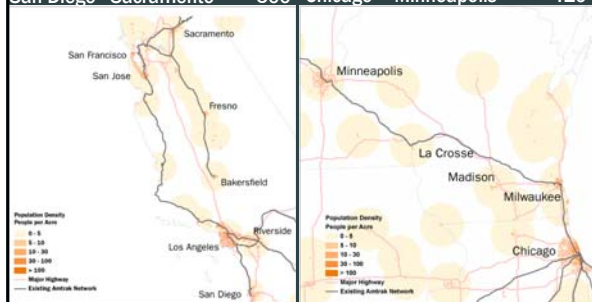
Corridor Length (miles)

New York – Philadelphia	100	Houston – Dallas	240
New York – Washington	225	Houston – San Antonio	200
Washington – Boston	450		



Air Markets/ Corridor Length (Mi)

San Diego – Los Angeles	120	Chicago – Milwaukee	90
Los Angeles – San Francisco	380	Chicago – Madison	150
San Diego – Sacramento	500	Chicago – Minneapolis	410



American High-Speed Rail

What is High-Speed Rail?

Intercity passenger rail service that is reasonably expected to reach speeds of at least 110 MPH.
- PRIIA 26106

The diagram illustrates three types of rail services on a track. From left to right, the services are: High-Speed Rail (110-124 MPH), High-Speed Express (110-124 MPH), and Conventional Rail (70-80 MPH). A bracket below the tracks indicates a distance of 100-150 miles. The High-Speed Rail and High-Speed Express services are shown with blue and green arrows, while the Conventional Rail service is shown with an orange arrow. The diagram also includes logos for the Department of Transportation and TIGER.

Source: U.S. DOT, Mar 2010

19
